

# ČESKÝ KRUMLOV



## APARTMENT



Prices: per Person/per Night

Apartment fully equipped with private bathroom and kitchen.

	SEASON	OFF-SEASON
2 beds	500 CZK	450 CZK
3 beds	550 CZK	500 CZK
2 beds	600 CZK	540 CZK

## ROOMS & HOSTEL



Prices: per Person/per Night

Rooms with private facilities

	SEASON	OFF-SEASON
Double room	450 CZK	400 CZK

Rooms with shared facilities

	SEASON	OFF-SEASON
dormitory (8-10 beds)	300 CZK	270 CZK
4 bed room	330 CZK	300 CZK
3 bed room	350 CZK	315 CZK
Double room	380 CZK	340 CZK

7<sup>th</sup> night free / Credit cards accepted /  
10% discount for ISIC, IYHF and HOE card holders



\* off season group discount:

6-12 people 15% more than 13 people 20%  
children under 12 years 50%

SEASON: 1. APRIL – 31. OCTOBER  
AND 27. DECEMBER – 2. JANUARY

## HOW TO REACH ČESKÝ KRUMLOV

**From Prague:** Trains leave Hlavní Nádraží/the Main train station multiple times per day. Tickets cost approx. 240 CZK (8 EUR) one way.

The train from Prague goes to České Budějovice (look for this name on the platform!), where you must change trains. Look for a smaller sized train that lists Český

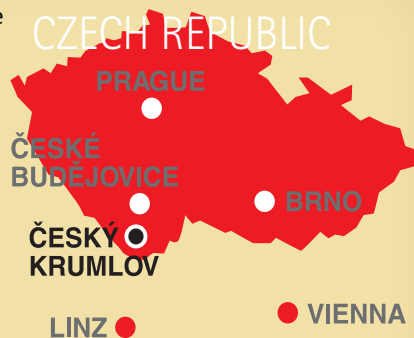
Krumlov as one of its stops (see main hall timetable for platform and stops of the train). Ride this train for approx. 55 minutes, until you see the Český Krumlov train station (it's not the last one, so stay awake!).

Buses leave Prague from the Roztyly Metro station (Red line C). Tickets cost approx. 140 CZK (5 EUR) one way.

There are few buses per day, with the final destination of Český Krumlov.

**From Vienna:** The train from Vienna will go via Gmund or Linz, and then in České Budějovice you have to change to train to Český Krumlov (see the directions from Prague above).

**For current info on transportation please visit [www.idos.cz](http://www.idos.cz).**

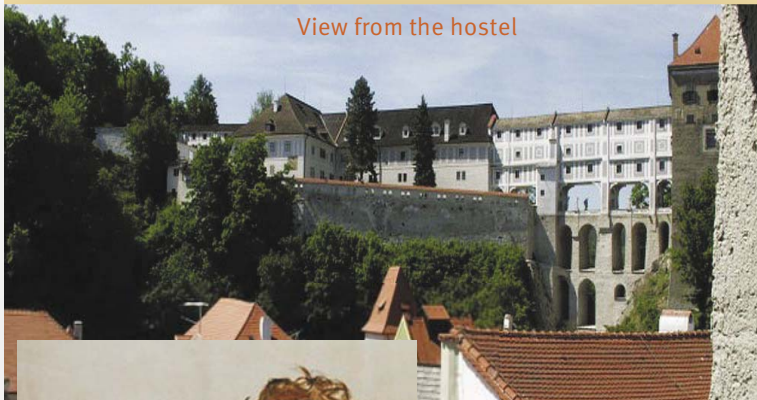


We offer lockers, linen & blankets, hot showers, free luggage room, bar, restaurant, kitchen for Guests' use, laundry, internet access.

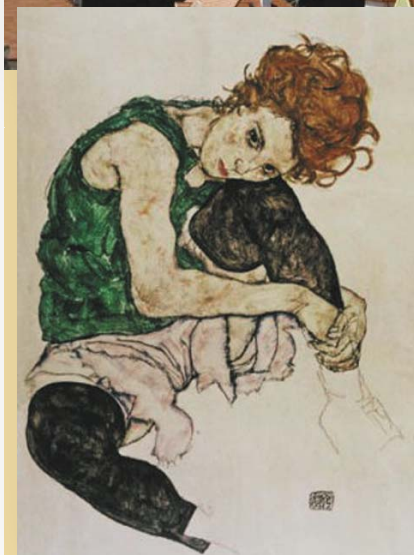
Our friendly staff will offer you the best information about the city (where to go, what to do, maps etc.).

## THINGS TO DO IN ČESKÝ KRUMLOV

Walk around the historical, UNESCO protected town center / Go **canoeing** in the Vltava River (a canoe rental service is available in town) or go innertubing with one of our Travellers' Hostel innertubes! / **Bike** around the beautiful South Bohemian countryside (a bike rental service is available in town) / **Swim** in the lovely Vltava River / **Tour** the famous castle / Go **hiking** in the Sumava Mountains / Go **windsurfing** on Lipno Lake / **Relax** in the beautiful castle gardens /



View from the hostel



Go horseback riding / Have a drink (or many!) in one of the town's 136 pubs / Enjoy the **local music scene**: The Rose Festival, classical music concerts, the Gypsy Bar, Rock clubs and live concerts in the Travellers' Hostel bar!



**Egon Schiele Art Centrum**  
5000 m<sup>2</sup> – exhibitions, studios, shop and café in a former city brewery building – open 365 days/year  
[www.schieleartcentrum.cz](http://www.schieleartcentrum.cz)

## HOW TO FIND US



**TRAVELLERS' HOSTEL**  
**SOUKENICKÁ 43**  
**ČESKÝ KRUMLOV**  
T/F: +420 380 711 345  
T: +420 731 564 144

TRAVELLERS' HOSTEL

**From the train station:** A 15 minute walk – turn right from the train station, then left at the end of the street. Follow the street until you hit a turnoff downhill to the right (just before a wooden umbrella). Take the path on the right side of the road and follow it all the way downhill until you hit the carpark underneath the castle. Walk straight under the castle bridge, then over the river and find us right below the main square (see the map).

**From the bus station:** A 5 minute walk from the very last station – the main bus station – follow the map.



## ČESKÝ KRUMLOV

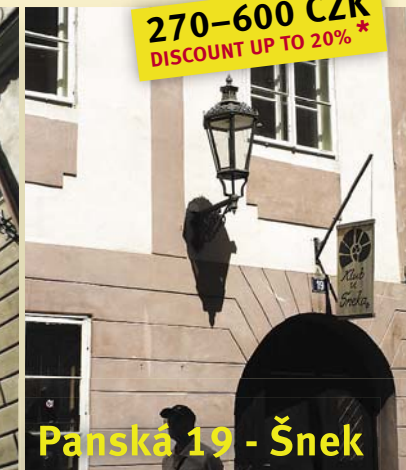
# TRAVELLERS' HOSTEL

## ZÁJEZDNÍ HOSTINEC

THE MOST BEAUTIFUL CITY IN THE **CZECH REPUBLIC**.  
NO CURFEW - SO YOU CAN RELAX AND ENJOY YOUR STAY.  
Hostel is located in two 13<sup>th</sup> century houses,  
few meters from the main square



Soukenická 43



Panská 19 - Šnek

270-600 CZK  
DISCOUNT UP TO 20%\*



[travellers.cz](http://travellers.cz)

[krumlov@travellers.cz](mailto:krumlov@travellers.cz)